

DISPLAY FOR SALE

SIMONDS
BUILDING HOMES SINCE 1949



2 WHISTLER DRIVE, BAIRNSDALE, VIC 3875

FLOOR PLAN: BULLER 26
FACADE: ALLANDALE

\$440,000

4 🚗 2 🍷 2 🛠️ 2 🚗 27.21sqrs 📏

DISPLAY INCLUSIONS:

- ▼ Raised ceiling to kitchen & meals area
- ▼ Large outdoor deck
- ▼ Evaporating cooling system
- ▼ Large master bedroom
- ▼ 40mm stone to kitchen
- ▼ Free standing bath
- ▼ Walk in pantry



For enquiries please contact:

Chris Cullen 0412 894 369 | chris.cullen@simonds.com.au

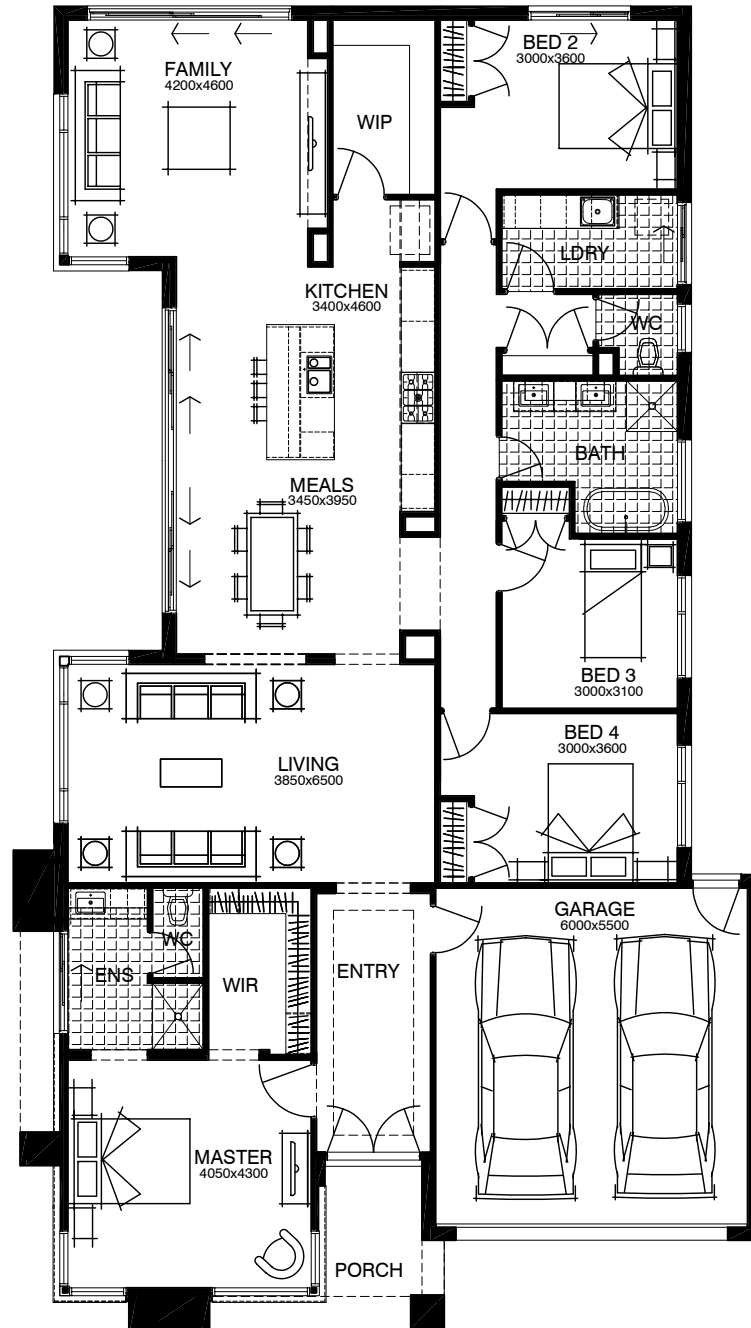
1300 SIMONDS | simonds.com.au

All advertised prices are correct at the time of publication and Simonds Homes reserves the right to accept or decline any offer, and/or alter pricing without notice. Price excludes furniture and décor items. Limited outgoings are paid for by Simonds Homes for the life of the leaseback (excluding land tax). Rental return is calculated as a percentage of the purchase price per annum and paid as stipulated in the agreement for the duration of the lease. Minimum lease terms apply.

DISPLAY FOR SALE

\$440,000

2 WHISTLER DRIVE, BAIRNSDALE, VIC 3875



For enquiries please contact:

Chris Cullen 0412 894 369 | chris.cullen@simonds.com.au

1300 SIMONDS | simonds.com.au