

# DISPLAY FOR SALE

**SIMONDS**  
BUILDING HOMES SINCE 1949



23 LIONSGATE CRESCENT,  
TARNEIT, VIC 3029

FLOOR PLAN: MEBBIN 25  
FACADE: STIRLING

# \$720,000

4 🚗 2 🍷 2 🛏 2 🚗 27.06sqrs 📏

## DISPLAY INCLUSIONS:

- ▼ Evaporating cooling system
- ▼ Large master bedroom with WIR
- ▼ Butlers pantry
- ▼ Large Alfresco



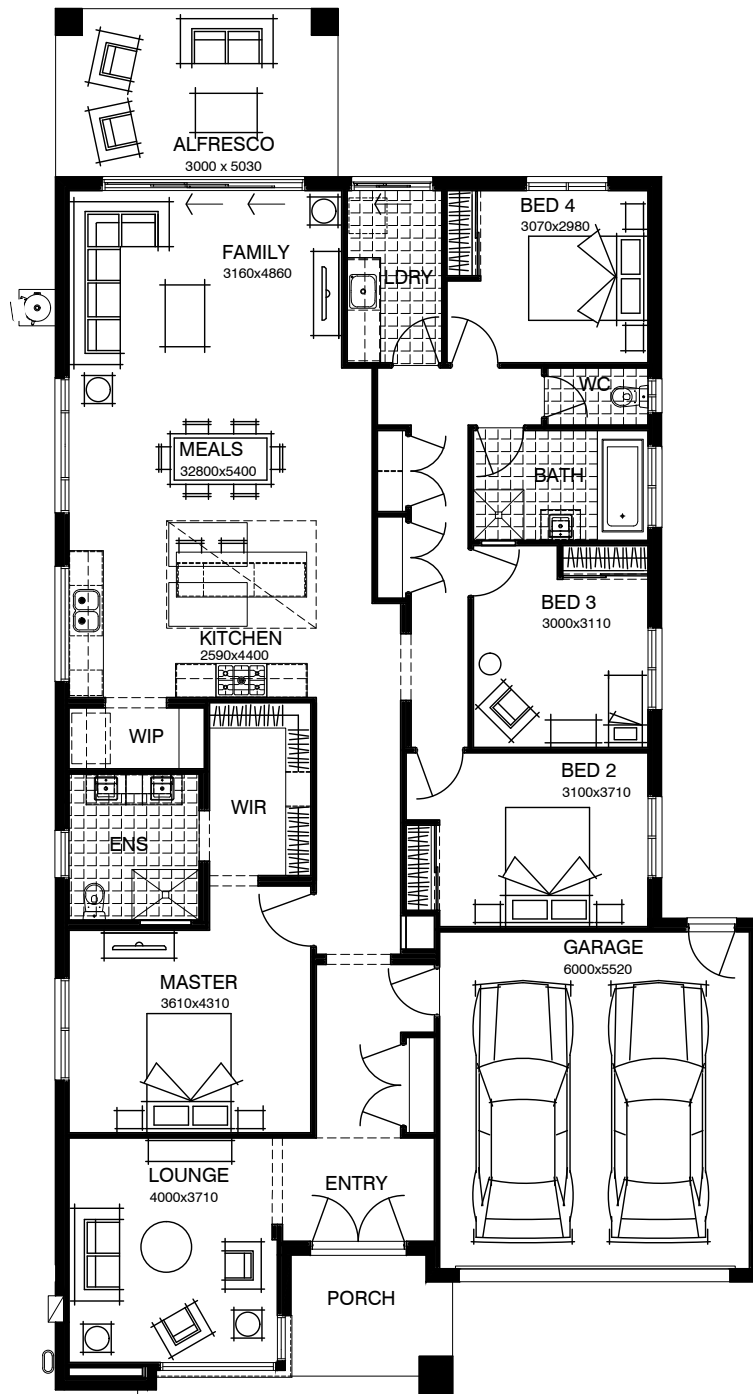
1300 SIMONDS | [simonds.com.au](http://simonds.com.au)

All advertised prices are correct at the time of publication and Simonds Homes reserves the right to accept or decline any offer, and/or alter pricing without notice. Price excludes furniture and décor items. Limited outgoings are paid for by Simonds Homes for the life of the leaseback (excluding land tax). Rental return is calculated as a percentage of the purchase price per annum and paid as stipulated in the agreement for the duration of the lease. Minimum lease terms apply.

# DISPLAY FOR SALE

# \$720,000

23 LIONSGATE CRESCENT, TARNEIT, VIC 3029



1300 SIMONDS | [simonds.com.au](http://simonds.com.au)

All advertised prices are correct at the time of publication and Simonds Homes reserves the right to accept or decline any offer, and/or alter pricing without notice. Price excludes furniture and décor items. Limited outgoings are paid for by Simonds Homes for the life of the leaseback (excluding land tax). Rental return is calculated as a percentage of the purchase price per annum and paid as stipulated in the agreement for the duration of the lease. Minimum lease terms apply.