

DISPLAY FOR SALE

SIMONDS
BUILDING HOMES SINCE 1949



LOT 135 HUEY STREET,
CRANBOURNE, VIC 3977

FLOOR PLAN: THIRLMERE 28
FACADE: DAVEY

\$820,000

4 🚗 2 🍷 2 🛋️ 2 🚗 30.57sqrs 📏

8% RENTAL RETURN

Terms and conditions apply

DISPLAY INCLUSIONS:

The Thirlmere 28 uses simple design to deliver the perfect solution for large, busy families. The front positioning of the master and the dedicated kids wing creates privacy, while the freeform kitchen, living and dining make it easy to be together. A key aspect of this home is plenty of storage and an oversized laundry. This is a beautiful home, but it is also very liveable and practical.

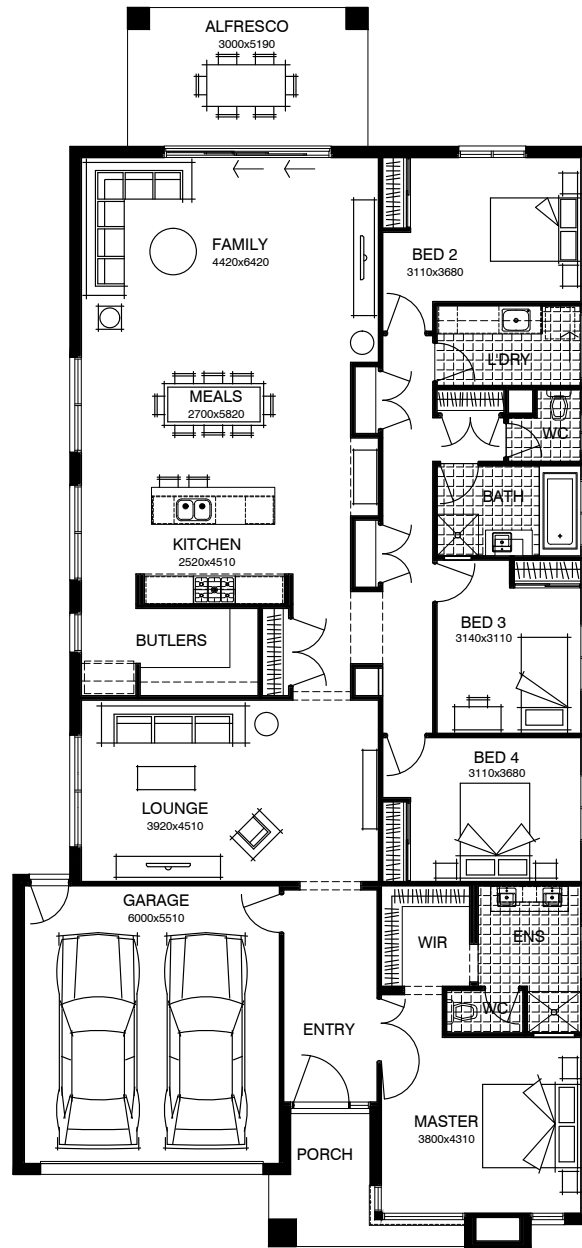
1300 SIMONDS | simonds.com.au

All advertised prices are correct at the time of publication and Simonds Homes reserves the right to accept or decline any offer, and/or alter pricing without notice. Price excludes furniture and décor items. Limited outgoings are paid for by Simonds Homes for the life of the leaseback (excluding land tax). Rental return is calculated as a percentage of the purchase price per annum and paid as stipulated in the agreement for the duration of the lease. Minimum lease terms apply. © 2020 Simonds Homes Victoria Pty Ltd - ACN:050 197 610 - CDB-U 49491

DISPLAY FOR SALE

\$820,000

LOT 135 HUEY STREET, CRANBOURNE, VIC 3977



1300 SIMONDS | simonds.com.au

All advertised prices are correct at the time of publication and Simonds Homes reserves the right to accept or decline any offer, and/or alter pricing without notice. Price excludes furniture and décor items. Limited outgoings are paid for by Simonds Homes for the life of the leaseback (excluding land tax). Rental return is calculated as a percentage of the purchase price per annum and paid as stipulated in the agreement for the duration of the lease. Minimum lease terms apply. © 2020 Simonds Homes Victoria Pty Ltd - ACN:050 197 610 - CDB-U 49491