

# DISPLAY FOR SALE

**SIMONDS**  
BUILDING HOMES SINCE 1949



Images shown are for illustrative purposes only and may not represent the final product such as lighting, window furnishings, timber look garagedoor & timber windows. Façade details including entry door and window sizing may vary between house types. Pricing also excludes features such as fencing, landscaping, letterbox, decking, driveway and any notable features of the façade, please speak to your consultant for further details

3 Mason Street, YARRABILBA

FLOOR PLAN: LINDEMAN 2214  
FACADE: ARTISAN

# \$495,000

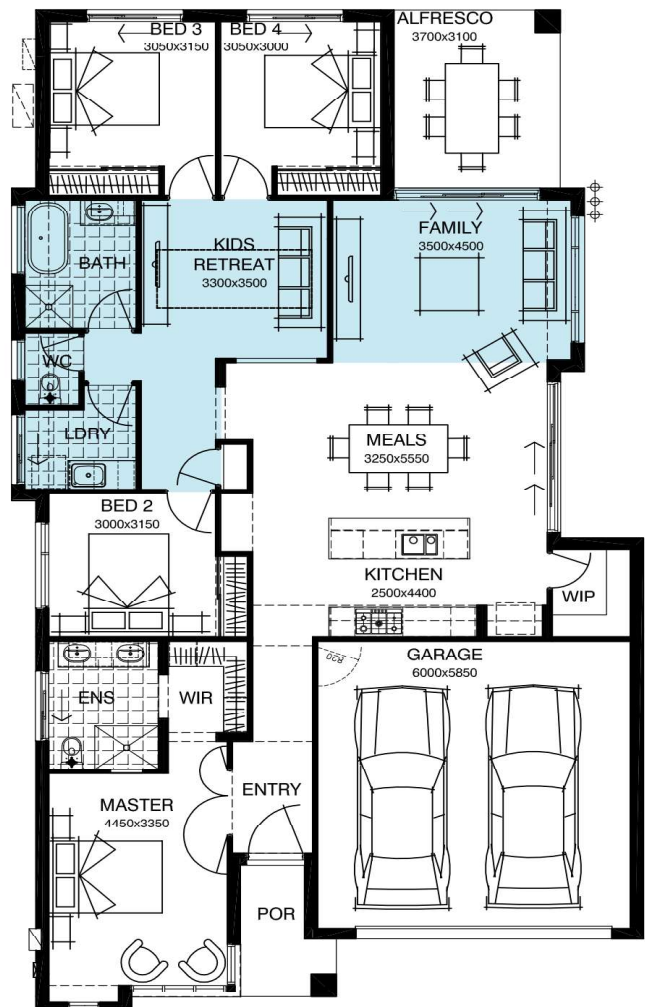
## DISPLAY INCLUSIONS:

This fully upgraded Simonds display is available to be purchased, ready to move in!!!

- ▼ MASTER BEDROOM WITH HUGE WIR AND EN-SUITE
- ▼ OPEN PLAN KITCHEN, MEALS AND LIVING AREA WITH WALK IN PANTRY
- ▼ NATURAL LIGHT IMPROVED WITH SKYLIGHT
- ▼ ALFRESCO AREA
- ▼ STONE BENCHTOPS
- ▼ 2740 MM CEILING HEIGHT
- ▼ SEPARATE KIDS RETREAT
- ▼ DUCTED AIR CONDITIONING AND CEILING FANS THROUGHOUT
- ▼ FULL HEIGHT WALL TILING TO BATHROOMS
- ▼ 6-STAR ENERGY RATING
- ▼ 900MM APPLIANCES
- ▼ SECURITY SYSTEM

For enquiries please contact:  
Sebastien Da Lozzo | [seb.dalozzo@simonds.com.au](mailto:seb.dalozzo@simonds.com.au)

4 🚗 2 🍷 2 🚗 2 📺 23sqrs 🏠



1300 SIMONDS | [simonds.com.au](http://simonds.com.au)

Package Price does not include stamp duty, government, legal or bank charges. Community Infrastructure Levy and Asset Protection Permit are not included in pricing and is to be arranged by the client directly with the Developer (if applicable). Any alterations may incur additional charges. Confirm land price and availability prior to purchase. Simonds reserves the right to withdraw or amend pricing, inclusions and promotion at any time without notice. \*\*Flyscreens and key locks to all standard openable windows. This package applies to QLD New Living range only. \*\*\*Please refer to the terms and conditions for the Lifetime Structural Guarantee at [www.simonds.com.au/terms-and-conditions](http://www.simonds.com.au/terms-and-conditions). Please speak with your sales consultant for further details. Pricing is current at 08/04/2019.