

DISPLAY FOR SALE

SIMONDS
BUILDING HOMES SINCE 1949



Images shown are for illustrative purposes only and may not represent the final product such as lighting, window furnishings, timber look garage door & timber windows. Façade details including entry door and window sizing may vary between house types. Pricing also excludes features such as fencing, landscaping, letterbox, decking, driveway and any notable features of the façade, please speak to your consultant for further details

17 Killara Estate, LOGAN RESERVE

FLOOR PLAN: HINCHINBROOK 17
FACADE: BOWEN

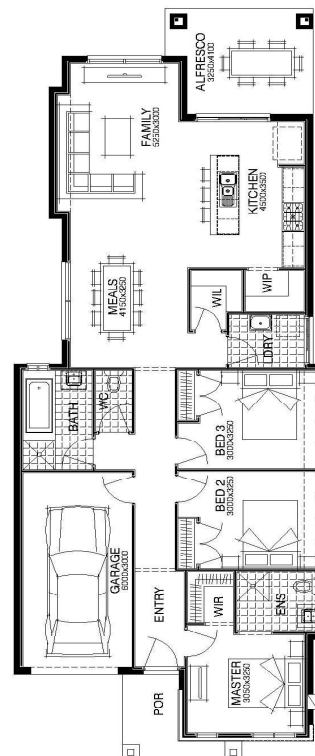
\$460,000

3 🚗 2 🍷 1 🚗 1 🏠 18.18sqrs 📏

DISPLAY INCLUSIONS:

This fully upgraded Simonds display is available to be purchased on a fixed leaseback for up to 2 years with a return of up to 8%.

- ▼ Stone Benchtops
- ▼ 2740 mm ceiling height
- ▼ Ducted reverse cycle air conditioning system
- ▼ Ceiling fans throughout
- ▼ 6-star energy rating
- ▼ 900 mm Appliances with built in 600mm ovens
- ▼ Security System
- ▼ Sprinkler System to Garden
- ▼ Enquire for full inclusions and upgrades list



For enquiries please contact:

Tina Bajwa 0451 558 669 | tina.bajwa@simonds.com.au

1300 SIMONDS | simonds.com.au

Package Price does not include stamp duty, government, legal or bank charges. Community Infrastructure Levy and Asset Protection Permit are not included in pricing and is to be arranged by the client directly with the Developer (if applicable). Any alterations may incur additional charges. Confirm land price and availability prior to purchase. Simonds reserves the right to withdraw or amend pricing, inclusions and promotion at any time without notice. **Flyscreens and key locks to all standard openable windows. This package applies to QLD New Living range only. ***Please refer to the terms and conditions for the Lifetime Structural Guarantee at www.simonds.com.au/terms-and-conditions. Please speak with your sales consultant for further details. Pricing is current at 08/04/2019.