

DISPLAY FOR SALE

SIMONDS
BUILDING HOMES SINCE 1949



7 SILVERWISP ROAD,
CHISHOLM, NSW 2322

FLOOR PLAN: RIVERLAND
FACADE: BERKLEY

\$660,000

4 🚗 2 🍷 2 🛋️ 2 🚗 25.92sqrs 📏

8% RENTAL RETURN

Terms and conditions apply

DISPLAY INCLUSIONS:

This statement home that is bold in layout is a perfect mix of comfort and convenience. Enjoy open-plan kitchen, living and dining area, a luxurious master bedroom and your very own media room. Everything about this home has been designed for family living.

For enquiries please contact:

Duke Brown 0422 235 512 | duke.brown@simonds.com.au

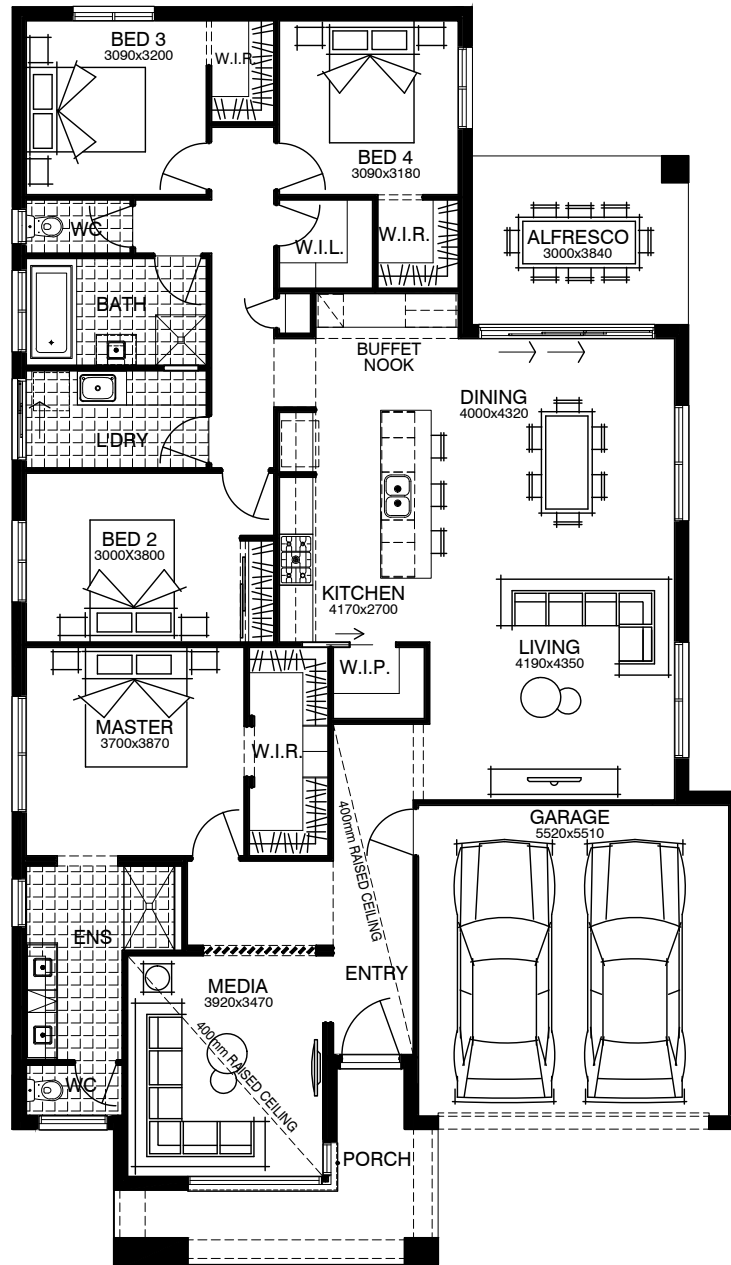
1300 SIMONDS | simonds.com.au

All advertised prices are correct at the time of publication and Simonds Homes reserves the right to accept or decline any offer, and/or alter pricing without notice. Price excludes furniture and décor items. Limited outgoings are paid for by Simonds Homes for the life of the leaseback (excluding land tax). Rental return is calculated as a percentage of the purchase price per annum and paid as stipulated in the agreement for the duration of the lease. Minimum lease terms apply. © 2019 Simonds Homes NSW Pty Ltd - ACN:085 795 786 - Licence 140646C

DISPLAY FOR SALE

\$660,000

7 SILVERWISP ROAD, CHISHOLM, NSW 2322



For enquiries please contact:

Duke Brown 0422 235 512 | duke.brown@simonds.com.au

1300 SIMONDS | simonds.com.au