

DISPLAY FOR SALE

SIMONDS
BUILDING HOMES SINCE 1949



145 WARNERVALE ROAD,
HAMLYN TERRACE, NSW 2259

FLOOR PLAN: SCARLETT
FACADE: ALLANDALE

\$750,000

4 2 3 2 32.25sqrs

8% RENTAL RETURN

Terms and conditions apply

DISPLAY INCLUSIONS:

When it comes thinking big, the Scarlett provides. Spatially, this home is simply unique. From the smart and secluded multi-purpose room that accesses the 3 bedrooms, right through to the open kitchen, meals and family area that flow out to the back alfresco. You can see that every aspect has been carefully considered. This family home is unforgettable and welcoming.

For enquiries please contact:

Jackie Barton 0419 417 755 | jackie.barton@simonds.com.au

1300 SIMONDS | simonds.com.au

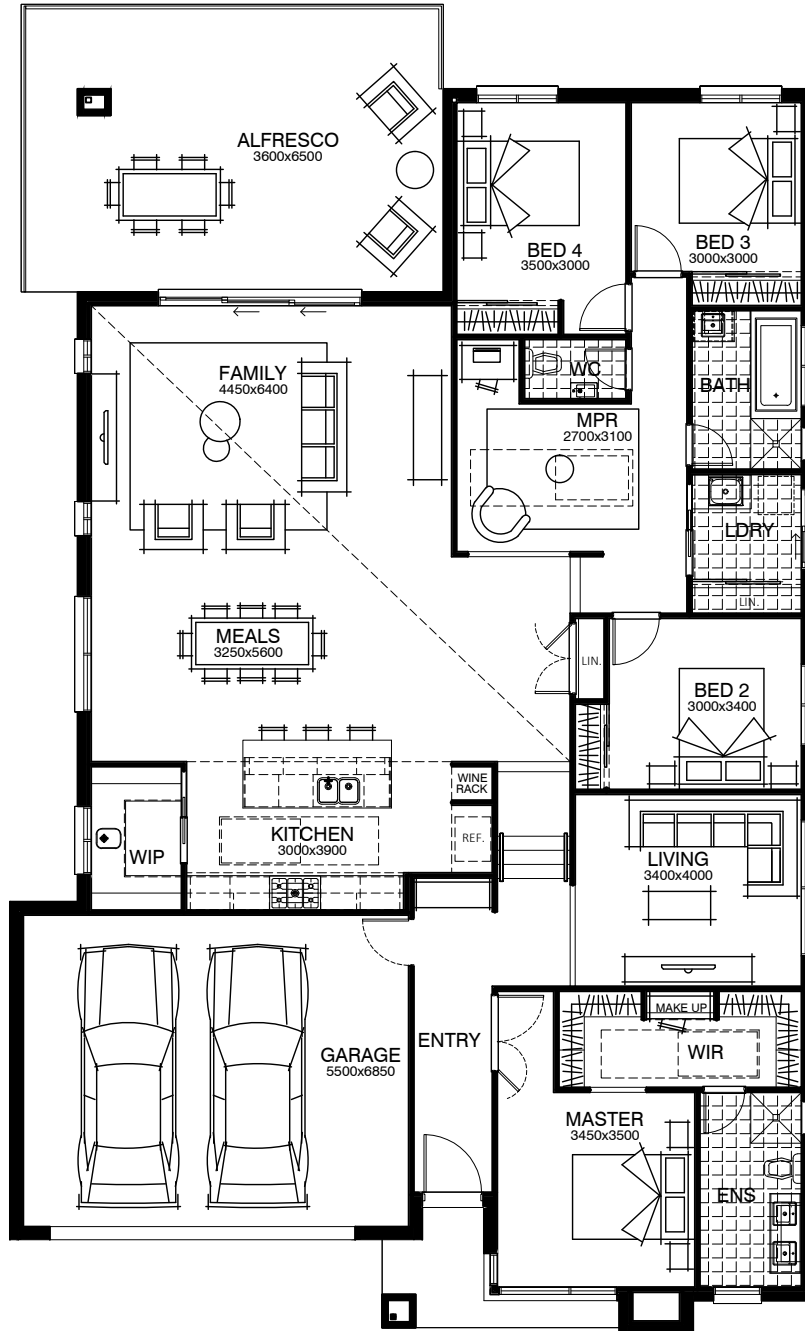
All advertised prices are correct at the time of publication and Simonds Homes reserves the right to accept or decline any offer, and/or alter pricing without notice. Price excludes furniture and décor items. Limited outgoings are paid for by Simonds Homes for the life of the leaseback (excluding land tax). Rental return is calculated as a percentage of the purchase price per annum and paid as stipulated in the agreement for the duration of the lease. Minimum lease terms apply. © 2019 Simonds Homes NSW Pty Ltd - ACN:085 795 786 - Licence 140646C

DISPLAY FOR SALE

\$750,000

145 WARNERVALE ROAD, HAMLYN TERRACE, NSW 2259

Ground Floor



For enquiries please contact:

Jackie Barton 0419 417 755 | jackie.barton@simonds.com.au

1300 SIMONDS | simonds.com.au

All advertised prices are correct at the time of publication and Simonds Homes reserves the right to accept or decline any offer, and/or alter pricing without notice. Price excludes furniture and décor items. Limited outgoings are paid for by Simonds Homes for the life of the leaseback (excluding land tax). Rental return is calculated as a percentage of the purchase price per annum and paid as stipulated in the agreement for the duration of the lease. Minimum lease terms apply. © 2019 Simonds Homes NSW Pty Ltd - ACN:085 795 786 - Licence 140646C